



Posted in: [Professional Theatre](#) on February 5, 2014 at 6:56 pm

[Email This](#)[Print](#)

## THE FULL MONTY at The Candlelight Theatre

Posted by [Holly Quinn](#)

It seems like just yesterday that New Candlelight Theatre (officially now named The Candlelight Theatre, with a snappy new logo and all) presented THE FULL MONTY, the randy musical based on the British film of the same name. The show premiered at NCT during the 2012 season, and, clearly, was popular enough that it's been brought back. Maybe it's because the actors actually go "full monty" (it's backlit, but there's full frontal), or maybe it's a show that draws groups for a tastefully wild evening. In any event, it's back to kick off the 2014 season.

While several NCT (TCT?) regulars reprise the roles they commanded in the previous production, including David T. Snyder as Dave, Peter Briccotto as Malcolm, Susan Dewey as Jeanette, and Colleen McGinnis as Estelle, **this production also features loads of actors making their Candlelight debut, including C.J. Celeiro in the lead as Jerry**, Michael Hogan as Horse, and Chris Balbi as the Chippendale stripper Keno (Billy D. Hart, who played Keno in the previous production, now plays "Hot Metal" stripper Ethan, and his new role fits him like a glove).

This musical version of THE FULL MONTY has been relocated from the UK to a working class neighborhood in Buffalo, New York, sometime in the '90s, based on references to Michael Jordan and VCRs. The local steel mill has laid off workers, and things are bleak, not least of all for Jerry, who is at risk of losing access to his 12-year-old son (Alexander Ryan, who gets some of the biggest laughs with his expressions alone) if he doesn't come up with a hefty child support payment. Despite the economic crisis, the ladies in town find a way to drop \$50 a pop to see a Chippendale's show organized by

Georgie (wonderfully played by Catherine Logan), wife of the out-of-work Dave. Jerry does the math: 1,000 women times \$50 is \$50,000, even a partial cut of which is an answer to his prayers. He pieces together a motley group of six laid off workers dubbed Hot Metal, including their former foreman Harold (a spot-on performance by Robert Miller), who has lost his job, too, a fact he's been hiding from his bubbly wife Vicki (Lindsay Mauk, in her 23rd Candlelight role), who is accustomed to a certain standard of living.

The show isn't all bawdy, male-stripping humor, though there's plenty of that. **At its heart, it's a story about a guy who will do anything to be with his son, and Celeiro and Ryan have a great chemistry.** There's new love, as Malcolm and Ethan find each other with "You Walk with Me," one of the show's emotional highlights, and sturdy, time-tested love between Dave and Georgie and Harold and Vicki, with the wives assuring their husbands that their love isn't superficial for the reprise of "You Rule My World." The show's nudity shouldn't be surprising, but the sweetness of these moments might be.

In the end, audiences get what they're promised: a full six-man strip show featuring "real men," and nothing left to the imagination. Tastefully done, of course.

## THE FULL MONTY

by Terrence McNally

Music and Lyrics by David Yazbek

Directed by Rob Harris

Choreography by Rob Harris

January 25 – March 9, 2014

The Candlelight Theatre

2208b Millers Rd,

Ardentown, DE 19810

302-475-2313

<http://www.nctstage.org/>



Latest Posts



### Holly Quinn

Holly is a Wilmington-based freelance writer and a Delaware Arts Info blogger. When she's not writing, crafting, or covering the arts in Delaware, she spends most of her time hanging out with her husband and tween son.

#The Candlelight Theatre

## Leave a Reply

Enter your comment here...

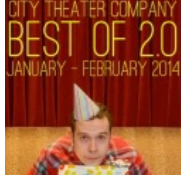


Search STAGE

Search



Upcoming Productions



## Sign up for MEMBERS ONLY audition notices!

Email Address\*

First Name

Last Name

\* = required field

powered by **MailChimp!**

## Stay Connected



Facebook



Twitter



RSS Feed



YouTube

## Like us!

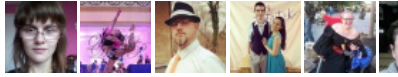
### Find us on Facebook



STAGE Magazine



3,105 people like STAGE Magazine.



Facebook social plugin

## Follow us!

### Tweets



**Stage Magazine** @stage\_magazine

THE FULL MONTY at The Candlelight Theatre [goo.gl/fb/811UG](http://goo.gl/fb/811UG) #profession



**Stage Magazine** @stage\_magazine

THE SCARLET PIMPERNEL, Role of "Ben", Town and Country Players, ONC



**Stage Magazine** @stage\_magazine

BEST OF 2.0 at City Theater Company [goo.gl/fb/Zn31o](http://goo.gl/fb/Zn31o) #aroundtheregio



**Stage Magazine** @stage\_magazine

GUYS AND DOLLS at Bridge Players: A Musical Fable That's a Dream Come  
Expand



**Stage Magazine** @stage\_magazine

THE EXONERATED Makes it's Delaware Valley Regional Premiere this Febru  
Expand



**Stage Magazine** @stage\_magazine

PCS Children's Theater Presents: MISS NELSON IS MISSING [goo.gl/fb/mW](http://goo.gl/fb/mW)



**Stage Magazine** @stage\_magazine

FOUR WEDDINGS AND AN ELVIS, The Playmasters Theater Workshop, 02  
Expand

Tweet to @stage\_magazine

### Recent Comments

### Popular Articles



**debbie adams barksdale:** My daughter Valerie (Katherine) so enjoys theatre any role !!! Melmark is an amazing opportunity f...



**M. Farina:** Parducci, you rock. ...



**Kerry Kristine McElrone:** Thanks Holly! ...



**Barbara A. Cavanaugh:** I just have to add that Aimee Miller stepped in valiantly to assume the role of Grace just two weeks...



**Wren Workman:** John M. Maurer did a great



job bringing together this cast and creating such a beautiful take on SPA...



**Dana:** Thank you, Carolyn! ...



**Joseph Perignat:** I don't know what a "bowling alley stage" is, but I do know that the T&C theater is an "arena &h...



**nancy ridgeway:** Bowling Alley stage? I'm not sure what that means, but as the Producer of An Evening of One Acts &h...

## Browse The Archives

Select Month



## Website Control Panel

[Log in](#)

[Entries RSS](#)

[Comments RSS](#)

[WordPress.org](#)

[STAGE Google Apps Login](#)

## Tags

**Act II Playhouse** [Actors' NET of Bucks County](#) [Allens Lane Theater](#) [B. Someday Productions](#) [Barley Sheaf Players](#) [Bridge Players Theatre Company](#) [Bucks County Playhouse](#) [Chapel Street Players](#) [City Theater Company](#) [Colonial Playhouse](#) [Curio Theatre Company](#) [dcp theatre](#) [Delaware Theatre Company](#) [Footlighters Theater](#) [Forge Theatre](#) [Haddonfield Plays and Players](#) [Hedgerow Theatre](#) **Kelsey Theatre** [King of Prussia Players](#) [Langhorne Players](#) [Mainstage Center for the Arts](#) [Methacton Community Theater](#) [Milburn Stone Theatre](#) [New Candlelight Theatre](#) [Newtown Arts Company](#) [Off Broad Street Players](#) [Old Academy Players](#) [Playcrafters of Skippack](#) [Players Club of Swarthmore](#) [Quintessence Theatre Group](#) [Resident Ensemble Players](#) [South Camden Theatre Company](#) [Spotlight Theatre](#) [STAGES at Camden County College](#) [Steel River Playhouse](#) [The Dramateurs Inc.](#) [The Eagle Theatre](#) [The Ritz Theatre Company](#) [The Stagecrafters](#) [Town and Country Players](#) [Tri-County Performing Arts Center](#) [Village Players of Hatboro](#) [Walking Fish Theatre](#) [Walnut Street Theatre](#) [Wilmington Drama League](#)

Copyright ©2010-2014 Stage Magazine, Inc.  
204 West 14th Street, Wilmington, DE 19801  
All Rights Reserved.

Theme design & development by **WPZOOM**  
Custom Design & Setup by [ the carpeted wall ]