

WELCOME TO BLACK AMERICAN PLAYWRIGHTS!



**Sit in your assigned seat and begin the DO NOW
immediately.**

DATE: Thurs, 03/13/25

LET'S SHARE DO NOW RESPONSE

What is your understanding of the term “intersectionality”?





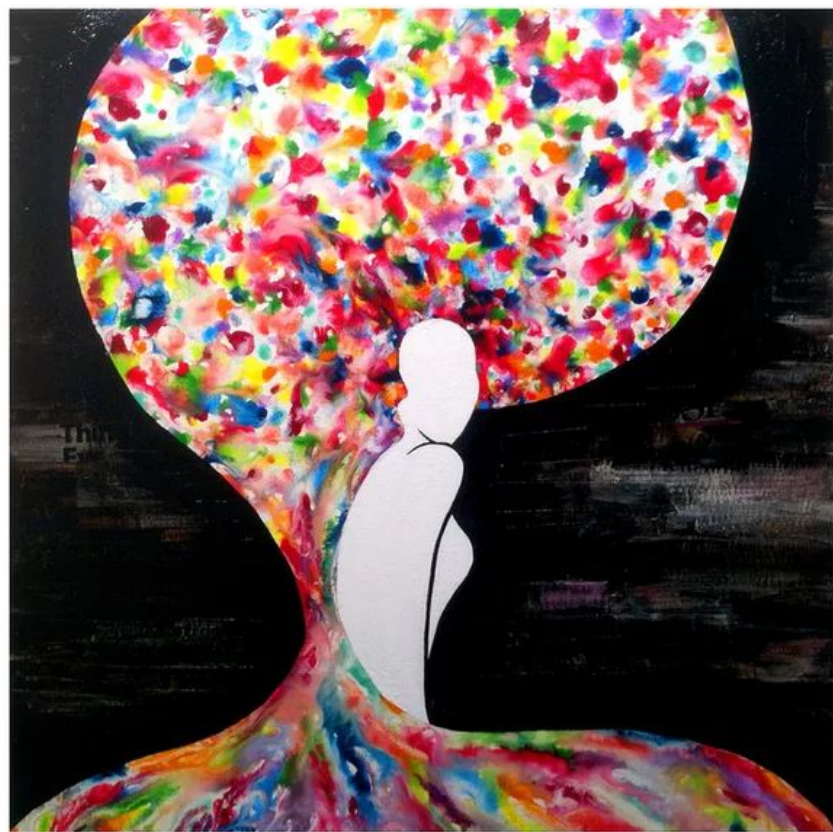
TURN & TALK/CLASSWORK

Discuss how you might feel prejudice because of two or more elements of your intersectional identity combined.











ART PROJECT!

DUE MONDAY,
03/17 BY 11:59PM

Goal: To create a visual representation of your own intersectionality

Materials: Copy paper, pencils, colored pencils, Posca markers, scissors



PART ONE: (70 pts) Using paper and art supplies, you must create a visual representation (either literal or abstract) that displays your own unique intersectional identity in America. **You must include at least 3 components of intersectionality,** but you may choose to include more if you would like.

PART TWO: (30 pts) On Schoology (or stapled to your art), you must write an extended paragraph that describes your artwork and the message it communicates. You must interrelate your artwork back to the text and make connections about the play. (Rubric attached)

Constructed Response Rubric

Component	1	2	3	4	5
CLAIM	Does not make a claim, or the claim is inaccurate. Does not answer all parts of the prompt.	Makes a claim that is accurate but not relevant to the prompt.	Makes a claim that is accurate but weak/vague/not specific in relation to the prompt. Answers some of the prompt.	Makes an accurate claim that answers the prompt.	Makes an accurate and complete claim that restates/refers to the prompt and answers all parts of the prompt.
EVIDENCE	Does not supply evidence to claim from the text.	Supplies evidence, but it is not directly related to the claim.	Supplies one short piece of evidence to support the claim.	Supplies at least one example from the text as evidence to support the claim.	Supplies 2 or more examples of evidence to support the claim.
REASONING	Does not support evidence with analysis.	Supports evidence with analysis, but does not directly relate to the claim.	Supports evidence with minimal analysis to support the claim.	Supports evidence with adequate analysis to support the claim.	Consistently supports evidence with analyses to support the claim.
CONCLUSION	Does not supply a concluding statement.	Provides a concluding statement that is irrelevant or does not support the claim.	Provides a concluding statement that partially relates to the claim.	Adequately provides a concluding statement that supports the claim.	Skillfully provides a concluding statement that supports the claim.
SYNTAX & VOCABULARY	Does not use appropriate professional language.	Rarely uses professional style and tone.	Establishes professional style and tone, but fails to maintain it.	Adequately establishes and maintains professional style and tone.	Consistently establishes and maintains professional style and tone.
MECHANICS	16+ spelling or grammatical errors.	10-15 spelling or grammatical errors.	6-10 spelling or grammatical errors.	3-5 spelling or grammatical errors.	0-2 spelling or grammatical errors.

CLAIM: Identify the 3 (or more) components of intersectionality in your artwork

EVIDENCE: Describe what your artwork looks like (imagine I have not seen it)

REASONING: Explain how your artwork represents who you are and your intersectionality. Relate this back to the play's message about intersectionality.

CONCLUSION: Wrap it up neatly and concisely.